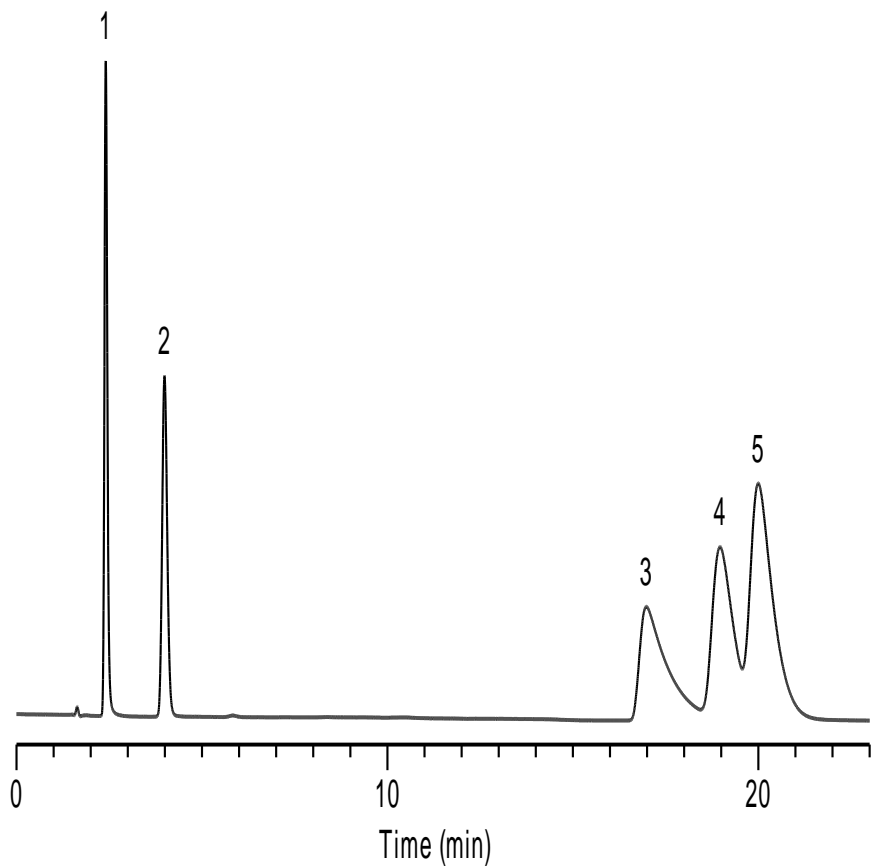


McCalley Test

- Columns: Listed on chromatograms
- Dimensions: 150×4.6mm 5μm(all columns)
- Mobile Phase: MeOH: 20mM Na₂HPO₄+NaH₂PO₄(pH=7.0)= 65:35
- Flow Rate: 1.0ml/min
- Temperature: Ambient
- Detector: UV 254nm
- Sample:
1. Pyridine
 2. Codeine
 3. Quinine
 4. Nortriptyline
 5. Diphenhydramine

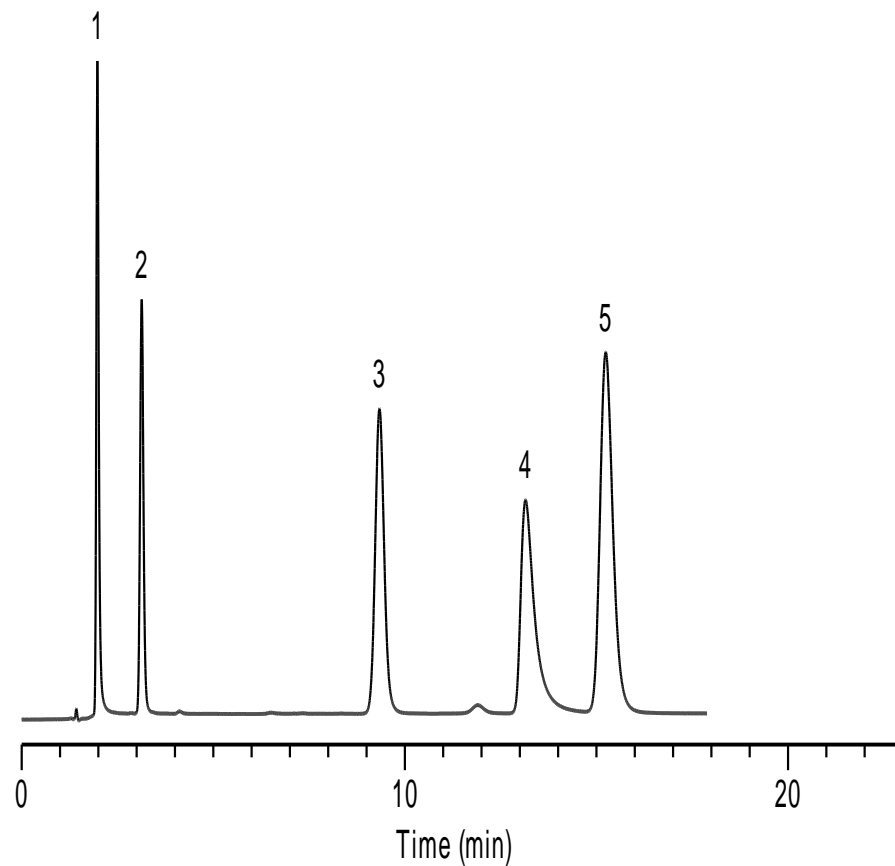
*ZORBAX,HC,TC,Eclipse are registered trademarks of Agilent Technologies.Gemini,Luna are registered trademarks of Phenomenex.Symmetry,XBridge are registered trademarks of Waters Corporation.BECKMAN Coulter is registered trademark of Beckman Coulter, Inc. SMT is registered trademark of Analtech Inc.Dikma Technologies is not affiliated with the above companies.

Diamonsil C18



[China](#)

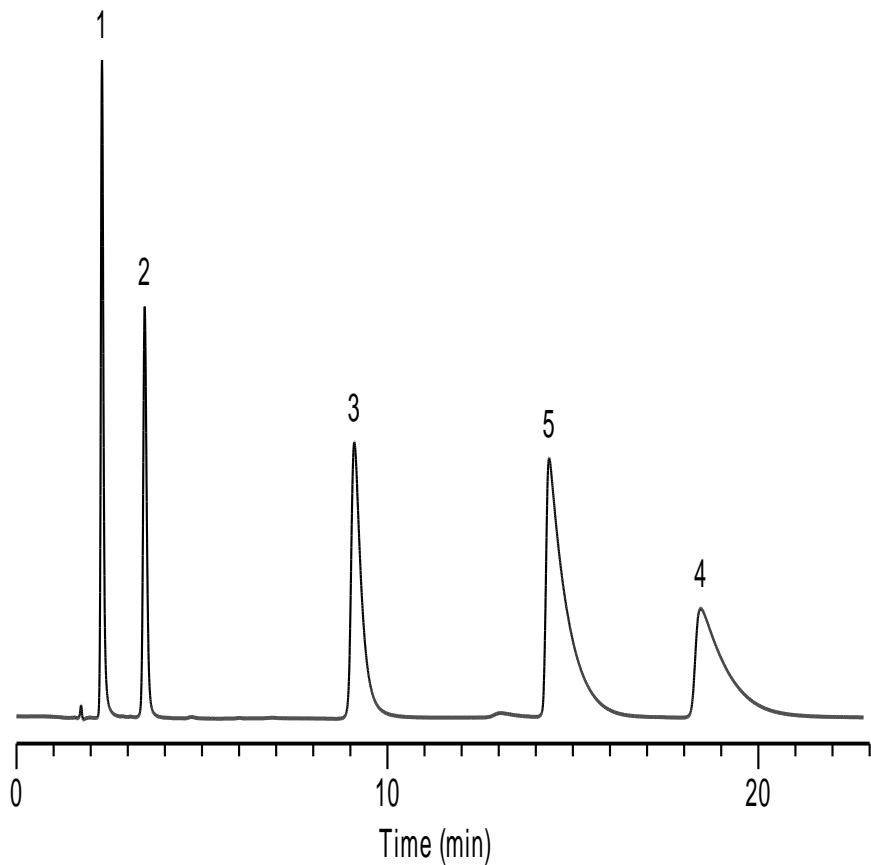
Inspire



[Canada](#)

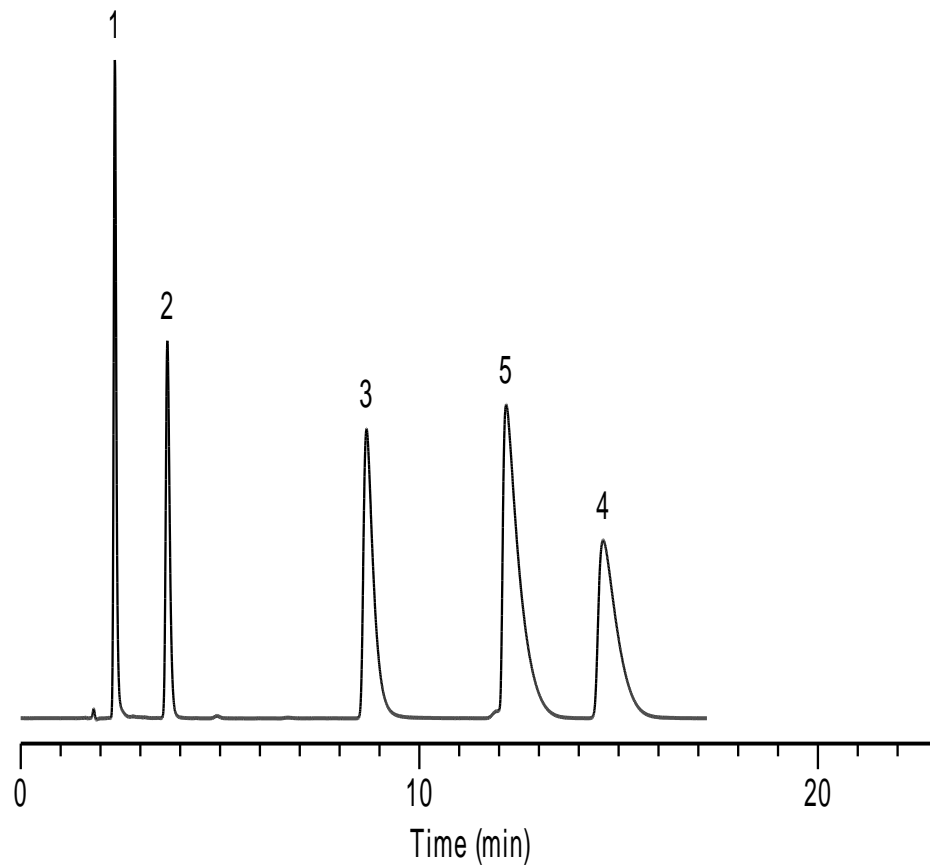
[US](#)

***Agilent HC-C18**



[China](#)

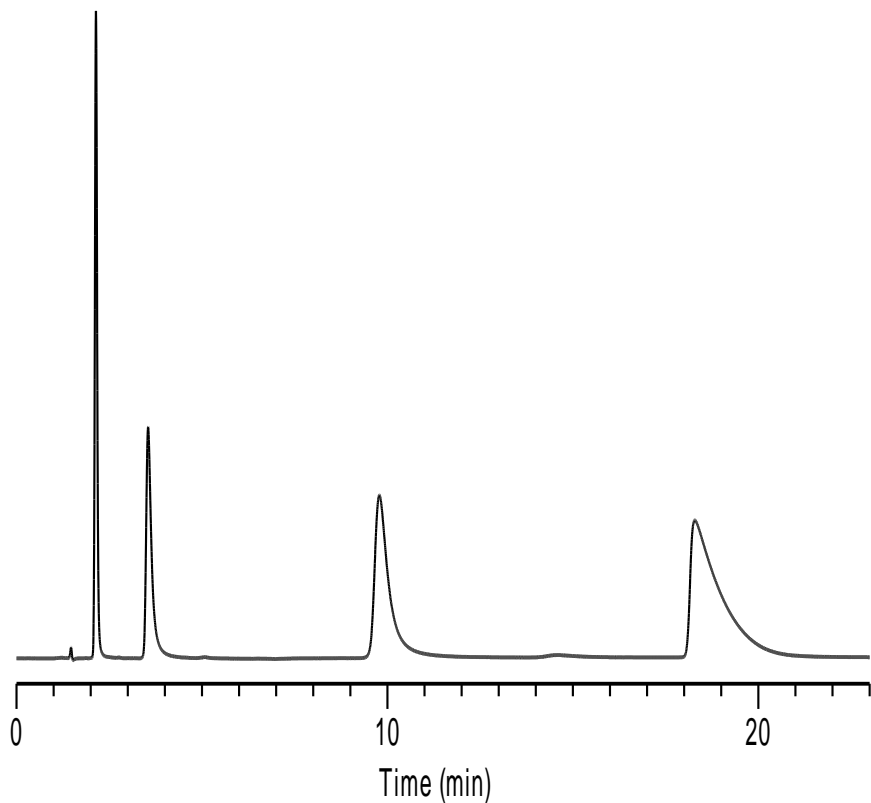
***Agilent TC-C18**



[Canada](#)

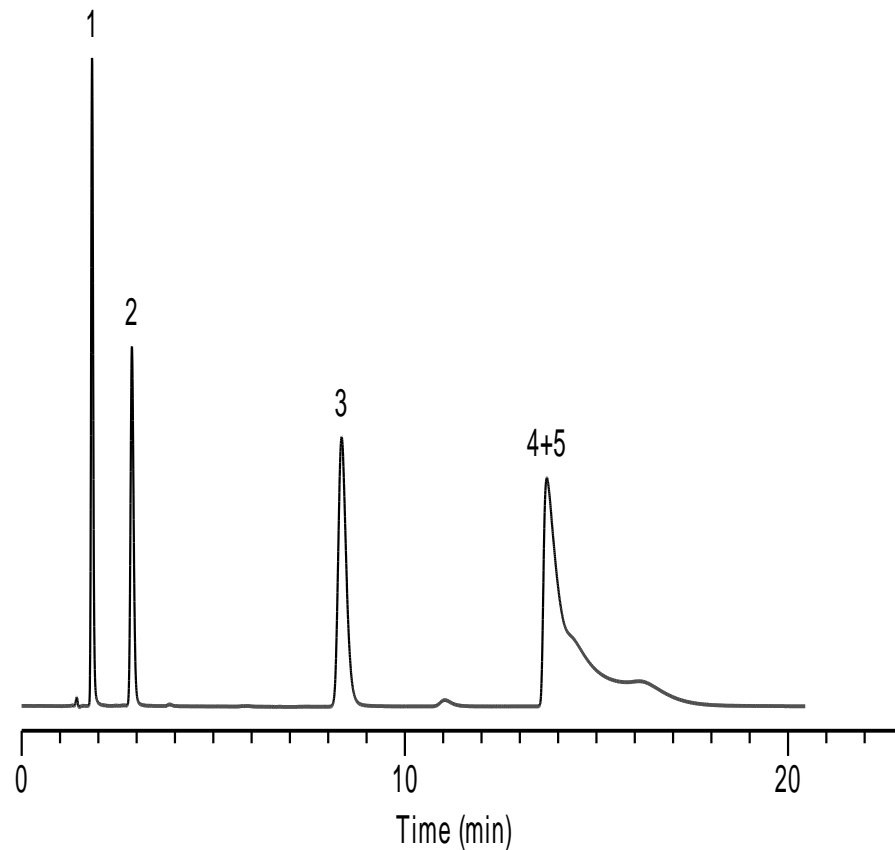
[US](#)

***Agilent Zorbax SB-C18**



[China](#)

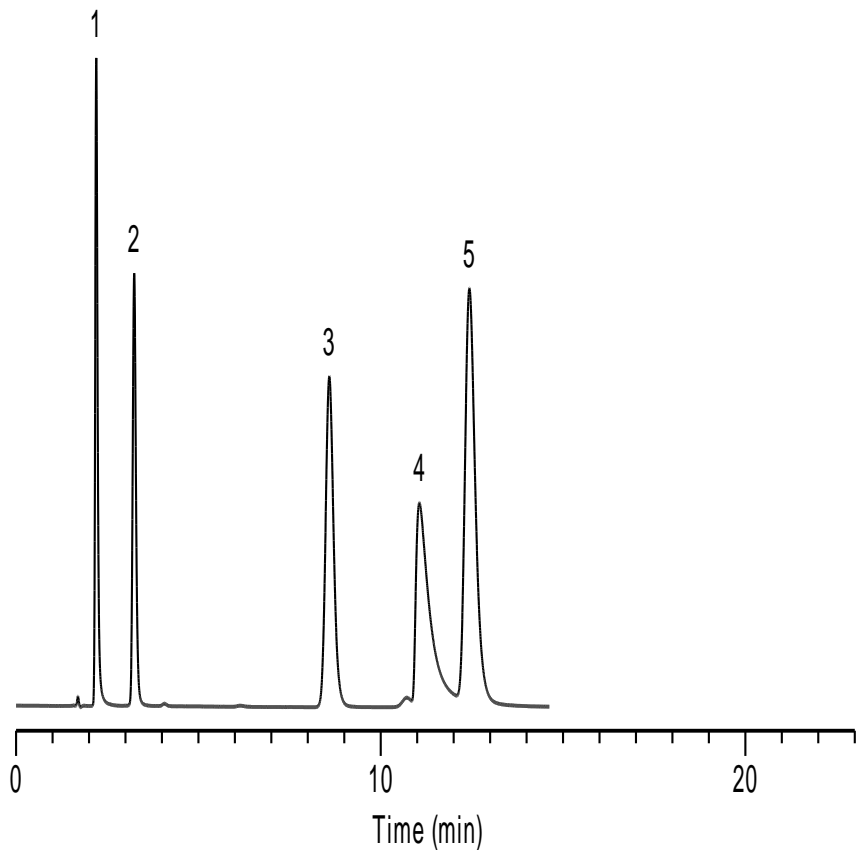
***Agilent Eclipse XDB-C18**



[Canada](#)

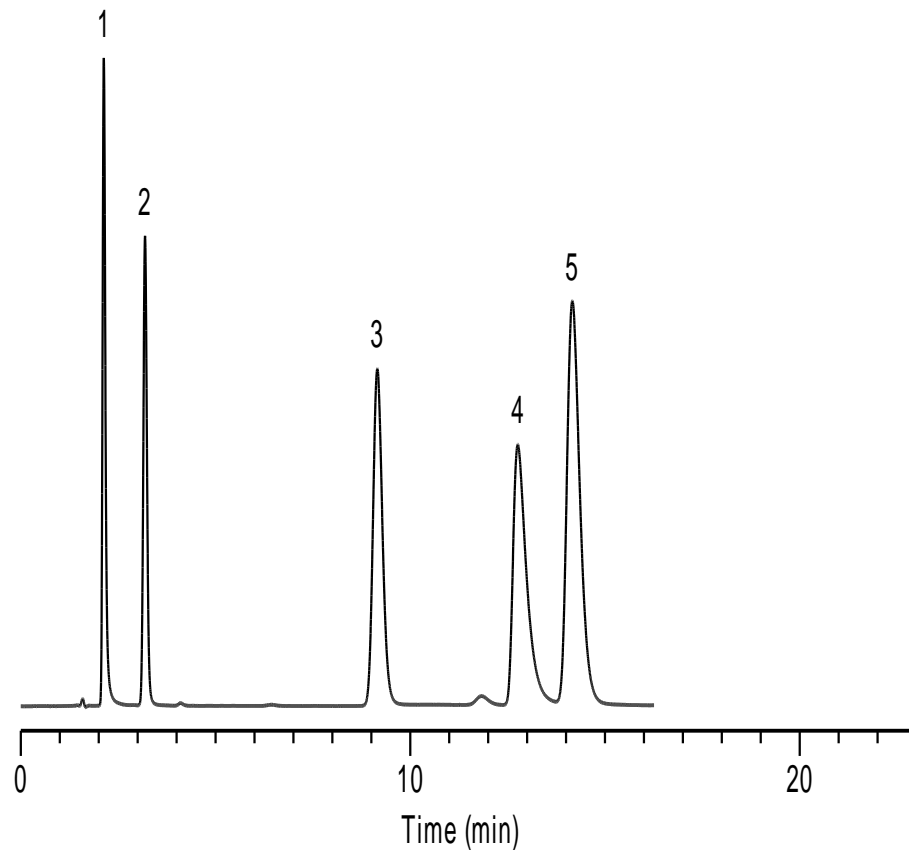
[US](#)

***Phenomenex Gemini-C18**



[China](#)

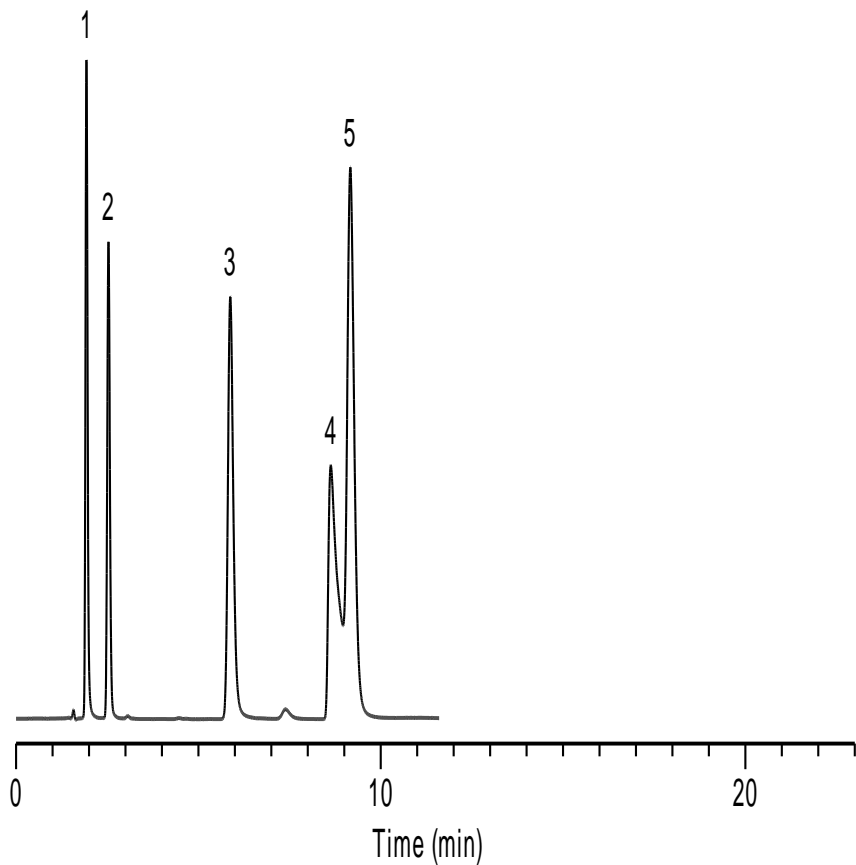
***Phenomenex Luna-C18(2)**



[Canada](#)

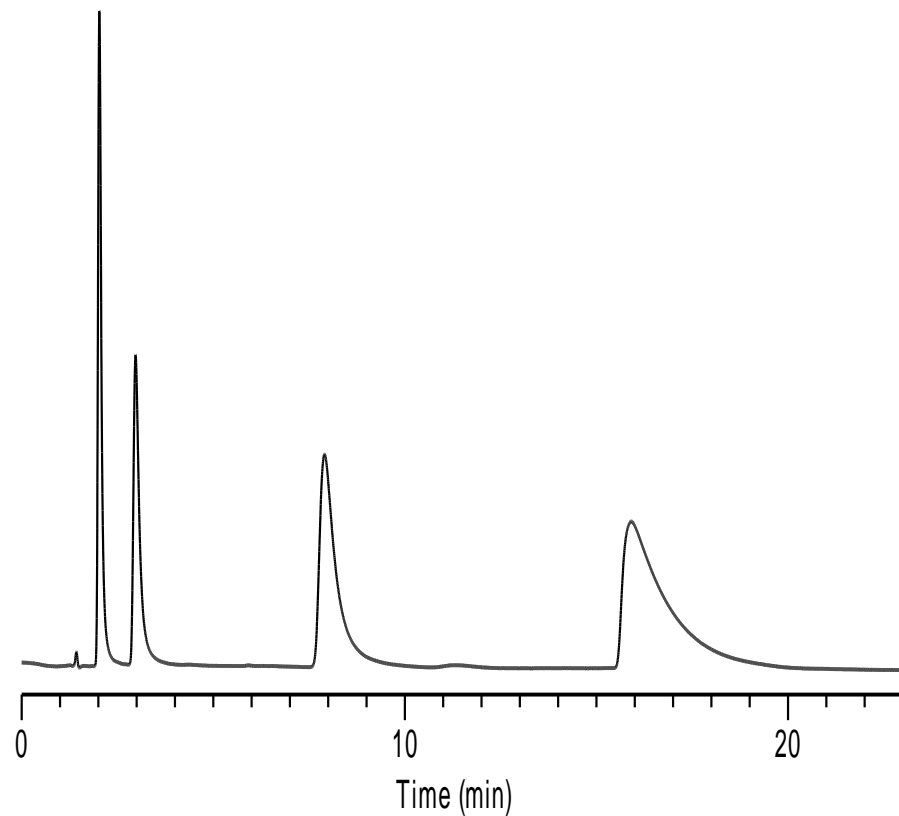
[US](#)

***Waters Xbridge-C18**



[China](#)

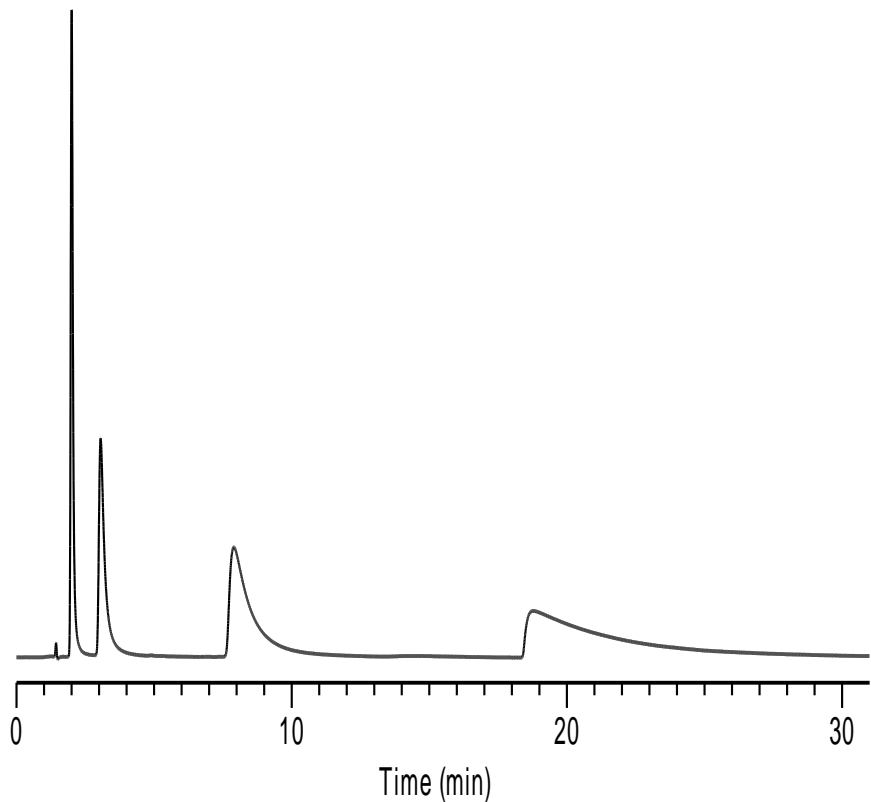
***Waters Symmetry-C18**



[Canada](#)

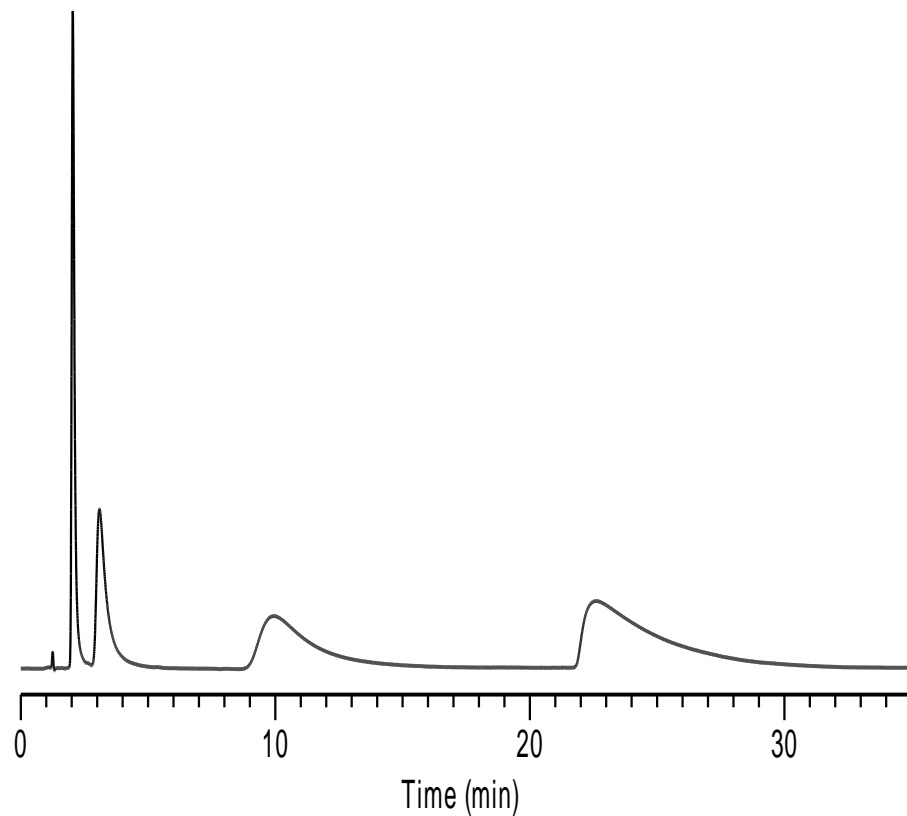
[US](#)

***BECKMAN Coulter-C18**



[China](#)

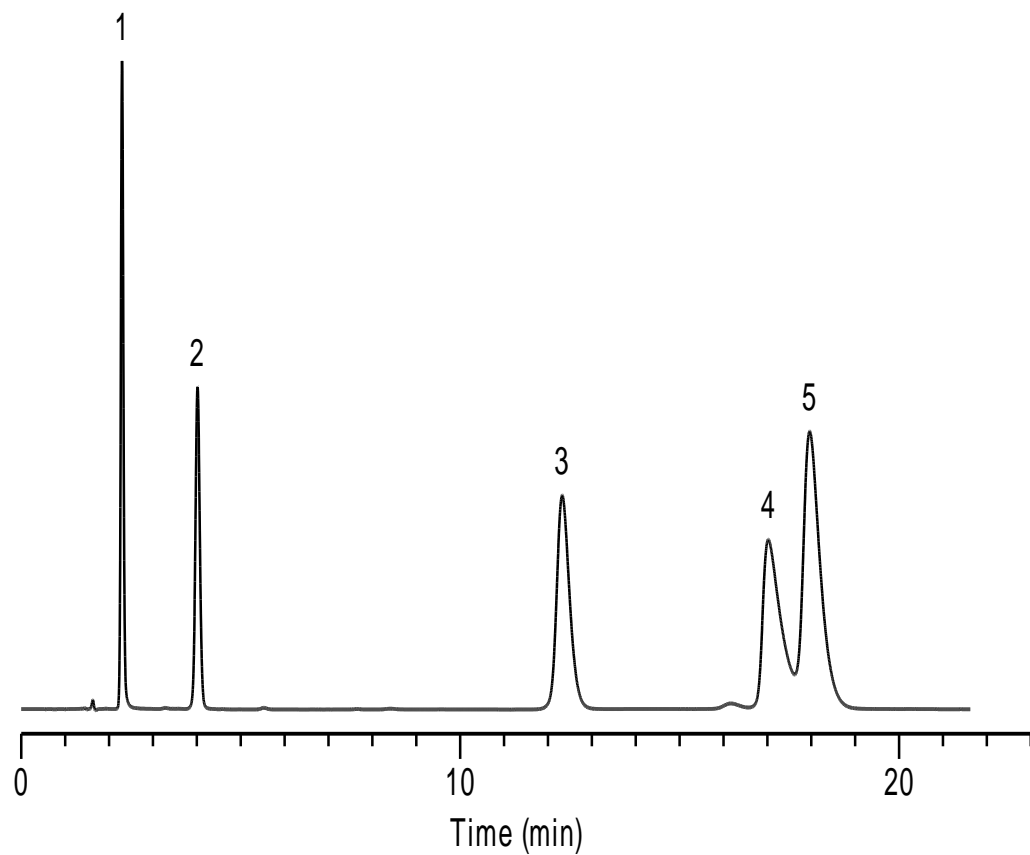
***SMT-C18**



[Canada](#)

[US](#)

Platisil C18



[China](#)

[Canada](#)

[US](#)

Column	As(pyridine)	As(codeine)	As(quinine)	As(nortriptyline)	As(diphenhydramine)
Diamonsil C18	1.294	1.198	3.215		
Inspire	1.456	1.182	1.145	2.058	1.325
*Agilent HC-C18	1.433	1.364	2.398	4.505	5.556
*Agilent TC-C18	1.376	1.511	2.439	3.115	4.000
*Agilent Zorbax SB-C18	1.221	1.988	2.110		5.681
*Agilent Eclipse XDB-C18	1.242	1.284	1.453		
*Phenomenex Gemini-C18	1.471	1.250	1.220	3.311	1.401
*Phenomenex *Luna-C18(2)	1.466	1.172	1.244	2.033	1.466
*Waters Xbridge-C18	1.282	1.193	1.361		
*Waters Symmetry-C18	1.754	2.096	2.463		3.861
*BECKMAN Coulter-C18	1.689	2.591	3.448		
*SMT-C18	1.776	2.469	1.692		
Platisil C18	1.166	1.094	1.381		